

Network device management solution.

iW Management Console
Version 3

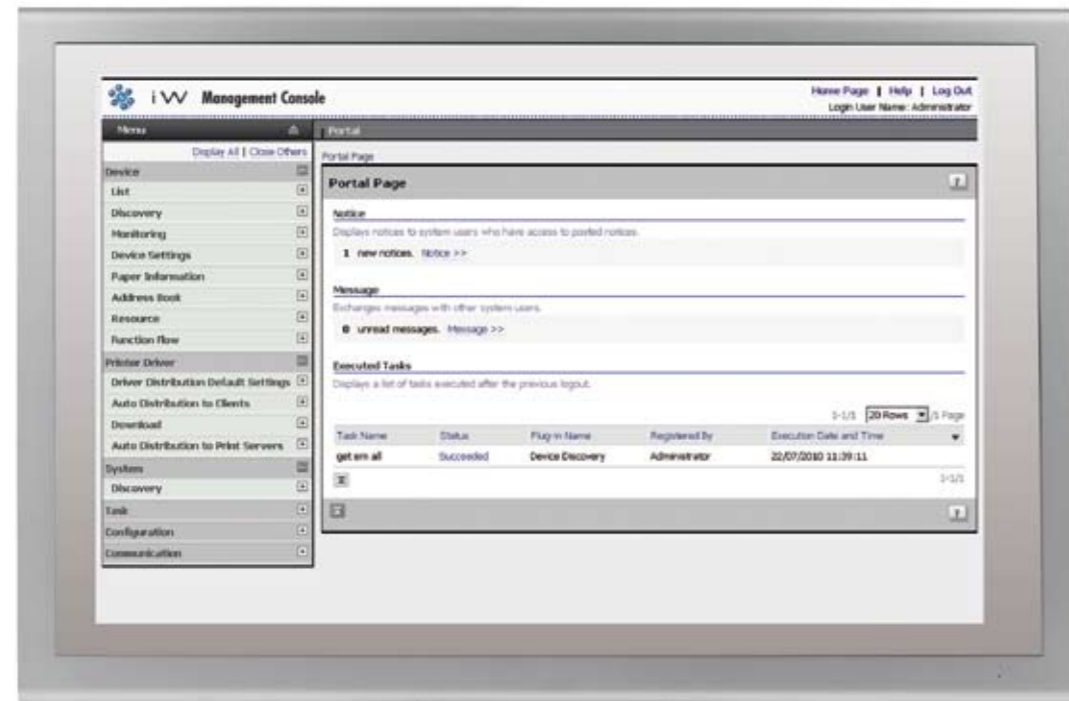
you can



Canon

Scalability. Reliability.
Real-time communications.
Productivity. Network efficiency.

You demand it from your ERP systems and every member of your supply chain. Isn't it about time you demand the same performance from your network device management solution?



Main portal

Canon's iW Management Console puts you in control of your printing infrastructure, optimising IT efficiency and reducing the total cost of ownership across the entire organisation. Our unified print and device management software solution is infused with the latest innovations to make network device management and control – as well as your job – easier than ever.

With iW Management Console you can speed-up problem resolution, streamline device control, and automate common tasks, reducing the burden on your IT resources. Plus, a modular framework allows for expandability through plug-ins, so you can always ensure the very best performance across your entire network.

iW Management Console – the total print infrastructure management solution.

Get the most out of the printing devices installed across your entire organisation



Maximise uptime across your organisation.

iW Management Console is a highly scalable, web-based installation and management tool capable of installing and managing multiple Canon and third-party devices on most customer networks.



Device List



Device Location Map

For IT personnel frustrated with having to cope with a multitude of individual device management tools, iW Management Console delivers a streamlined, centralised point of control for all devices installed across your organisation. Its expandability helps to speed the correction of error conditions by directing low toner, paper jams, and maintenance alerts via e-mail messages to the designated network administrator. With iW Management Console, IT administrators are provided with a single, integrated utility to manage network peripherals from any connected PC. What's more, multiple iW Management Console servers can be installed on your network in different geographical locations to reduce network traffic, so you can place device management portals where you decide they are needed most.

Server discovery and management module

IT administrators can easily discover other iW Management Console servers installed on the network.

Identify and locate devices

Simplify device identification tasks by naming peripherals by type or location, such as Third Floor West - Colour iR device.

Create a map and position devices on it for quick and easy location. Click on a device icon to access device and error information.

Identify device configuration

Through Remote UI, Canon's browser-based device status utility - a graphic image and primary information about the target device - is displayed. Users can see the amount of memory, hard disk space, paper sizes, and quantities remaining in the unit, as well as available finishing modes to help users make informed printing decisions from the desktop.

Manage third-party devices complying with the standard printer MIB

Consolidate network device management regardless of brand or manufacturer through a single utility for added convenience.

View device status

Connected devices immediately report changes in status conditions via e-mail sent to a system administrator or a specific end-user for the fast resolution of errors such as paper jams or out-of-toner/ink conditions. Devices with errors can quickly be physically located on a device map.

Customise viewing preferences

Sort devices by protocol, type, or group to segment and manage them as your environment demands, such as All Black-and-White Printers, for example.

Versatile communication tools

Send notices to other IT administrators about device status, and exchange messages with individuals or every connected user to inform them about changes to the printing environment or device configuration.

! You can place device management portals where you decide they are needed most



Automated task management to simplify your day.

Large corporate organisations are just that – large. For Fortune 500 organisations and entities with global reach, it's impossible to be in all places at once.



Delivery of device settings



Discovery of new devices

Imagine the drain on productivity if IT personnel had to modify individual device address books each time an employee joined, transferred, or left the company. Or if they had to physically travel to a new device to install it on the network. That's why iW Management Console offers advanced automated task management capabilities. A task is a set of instructions created by an IT administrator that is to be executed immediately or at timed intervals if it relates to a function requiring regular updating. Some of the ways in which iW Management Console can improve your productivity include the following:

Discovery of new devices

Through SNMP, query all Canon and third-party networked devices and automatically add new ones to the database for initial setup and configuration.

Delivery of device settings

Retrieve device settings, such as IP addresses, locations, and system manager contact information, and reset them to their default conditions as often as necessary to minimise calls of network printer problems.

Address book updates

Replicate and import address book data from a reference machine to all installed devices that support Canon's Device Information Delivery Settings mode to ensure each device contains identical, up-to-date address book data.

Furthermore, administrators have complete control over the initiation of any task. Execute device information retrieval and delivery overnight or on the weekends to minimise disruption during business hours.

Printer driver installation

Save time and minimise inconvenience by remotely "pushing" printer drivers to client PCs during low traffic periods, or make drivers available for users or administrators to "pull" down and install at a time that suits them.

Distribute Resources

Manage and distribute resources such as ICC Colour Profiles, PCL fonts and PCL Macros.

Expand your span of control.

iW Management Console is a foundation for future innovation due to its unique architecture and is designed for easy implementation and simplified expandability.

Reduce your total cost of ownership, even as you increase device control. Versatile plug-ins support address book management features plus value-added capabilities, such as system logs and grouping functions, to quickly manage users and devices. Plug-ins supporting additional areas of functionality are always in the pipeline.



User access privilege



Address book management

Address book management plug-in

Create or retrieve address books from Canon networked devices, and then edit, save, and redeliver comprehensive, identical address books to all iR/imageRUNNER ADVANCE devices in a single task. Also, retrieve, edit and distribute device one-touch buttons.

Printer driver management plug-in

Carry out "push" or "pull" installations of printer drivers to networked PCs.

Resource management plug-in

Manage and distribute resources such as ICC Colour Profiles, PCL fonts and PCL Macros to devices. These resources can then be used by users when they print from their PCs.

Customise user access privileges

Closely manage and modify accessible features and capabilities by individual user or groups.

iW Management Console supports the Active Directory domain environment for easy user management.

Manage users and devices in groups

Simplify updates and changes to device settings by creating groups to execute tasks targeted at multiple users and/or devices simultaneously with a single command.

Usage logs trace system activity

IT administrators can review and export system logs for a history of all tasks and activities executed by the iW Management Console server.

Specifications: iW Management Console

	iW Management Console server requirements
Hardware (minimum)	Pentium 4 processor, 2 GHz or faster (Recommended: Core2 Duo processor, 2 GHz or faster) 1024 MB minimum (Recommended: 2048 or more) 100MB HDD Space Note: To use iW Management Console in combination with an SQL database server, 2GB of free hard disk space is required. (Recommended: 10GB or more.)
Operating Systems Supported	Microsoft Windows Server 2003 Enterprise SP2/Standard SP2 (x32) Microsoft Windows Server 2003 R2 Enterprise SP2/Standard SP2 (x32) Windows Server 2008 Enterprise/Enterprise SP2/Standard/Standard SP2 (x32/x64_IPv6) Windows Server 2008 R2 Standard/Enterprise (x64_IPv6) Microsoft Windows XP Professional SP3 (x32) Microsoft Windows Vista Ultimate SP1/SP2 (x32_IPv6) Microsoft Windows Vista Business SP1/SP2 (x32_IPv6) Microsoft Windows Vista Enterprise SP1/SP2(x32_IPv6) Microsoft Windows 7 Professional Edition (x32_IPv6) Microsoft Windows 7 Ultimate Edition (x32_IPv6) Microsoft Windows 7 Enterprise Edition (x32_IPv6)
Web Server	Microsoft Internet Information Services 5.1/ 6.0/ 7.0/7.5
Software Runtime Environment	Microsoft .NET Framework Version 2.0 SP1 / SP2 Microsoft .NET Framework Version 3.0 SP1 Microsoft .NET Framework Version 3.5 / SP1 Microsoft .NET Framework Version 3.5 SP1 Microsoft Web Services Enhancements 3.0 for Microsoft .NET Redistributable Runtime Microsoft Data Access Components 2.8 SP1
Databases Supported	SQL Server 2005 SP2 / SP3 SQL Server 2005 Express SP2 / SP3 SQL Server 2008 / SP1 SQL Server 2008 Express / SP1

	iW Management Console Client workstation requirements
Operating Systems	Microsoft Windows 2000 Server SP4 (x32) Microsoft Windows Server 2003 Enterprise / Standard Edition SP2 (X32/x64) Microsoft Windows Server 2003 R2 Enterprise / Standard Edition SP2 (X32/X64) Microsoft Windows Server 2008 Enterprise / Standard Edition / SP2 (X32/X64) Microsoft Windows Server 2008 R2 Enterprise / Standard Edition (X64) Microsoft Windows 2000 Professional SP4 (x32) Microsoft Windows XP Professional SP3 (x32/x64) Microsoft Windows Vista Ultimate / Business / Enterprise SP1 / SP2 (x32/x64) Microsoft Windows Vista Home Basic / Home Premium SP1 / SP2 (x32/x64) Microsoft Windows 7 Professional Edition (x32/x64_IPv6) Microsoft Windows 7 Ultimate Edition (x32/x64_IPv6) Microsoft Windows 7 Enterprise Edition (x32/x64_IPv6) Microsoft Windows 7 Home Premium Edition (x32/x64_IPv6)
Web Browser Supported	Microsoft Internet Explorer 6.0 SP1 or Later
Display	SVGA 800 x 600 or Higher Resolution, 16-bit (65,536 Colours) or Higher
<p>All data is based on Canon's standard testing methods. This brochure and the specifications of the product have been developed prior to the date of product launch. Final specifications are subject to change without notice.™ and ©: All company and/or product names are trademarks and/or registered trademarks of their respective manufacturers in their markets and/or countries.</p>	

iW Management Console is available for download from the Canon Software Download Center.
<http://software.canon-europe.com/> under iW Series Software/MEAP



Office Technology Irl. Ltd.,
Unit G9, Riverview Business Park,
Nangor Road,
Dublin12.
Tel: +353 1 460 4444
Fax: +353 1 460 3333
www.officetechnology.ie