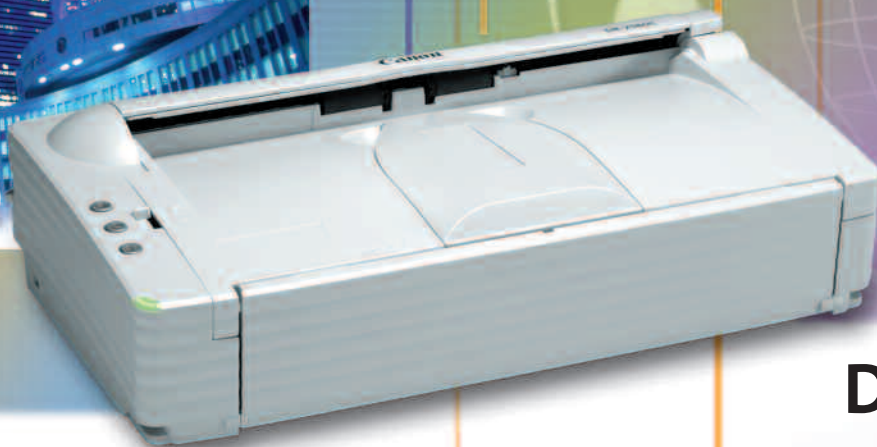


Canon



IMAGE FILING SOLUTIONS



DR-2580C

IMAGE FILING SOLUTIONS

COMPACT, PORTABLE POWER

Canon is known throughout the world for its ability to transform the latest technology into practical applications. The award-winning DR-2580C color scanner is no exception. It accommodates a wide range of source materials, including plastic cards. This powerful scanner is both compact and portable, so you can put it on your desktop or take it on the road.



DR-2580C

A DESKTOP SCANNER THAT HANDLES IT ALL

The DR-2580C model defines a new class of scanners by incorporating features previously only available on production-level machines. Among the first in the workgroup category, the DR-2580C scanner offers Ultrasonic Double-Feed Detection to reliably capture mixed document types. Built to boost productivity, it's capable of scanning at a rapid rate of up to 25 pages or 50 images per minute.*

For maximum document handling flexibility, the DR-2580C offers two feeding mechanisms. Straight Path feeding allows you to scan thick documents or plastic cards, such as insurance cards or driver licenses. Batch scanning is a one-step process—simply drop mixed paper sizes into the 50-sheet ADF and hit start. Additionally, the DR-2580C can easily handle large documents up to 39" in Long Document Mode or the occasional 11" x 17" in Folio Mode. For added versatility, the scanner can be paired with either a full or half letter-sized flatbed scanner unit to scan books, fragile documents, or passports.

LOADED WITH POWERFUL IMAGE PROCESSING SOFTWARE

The Canon DR-2580C color scanner arrives bundled with CapturePerfect® 3.0 and Adobe® Acrobat® 7.0, so it's ready to use right out of the box. Plus, it's packed with new, intuitive features that put you in control of the image capture process.

CapturePerfect is a robust, out-of-the-box document imaging application that maximizes the performance of DR-Series Scanners, so you can scan, view, save, distribute, and print office documents more easily than ever before. Plus, CapturePerfect is compatible with every feature on the Canon DR-2580C scanner and offers a number of post-scan image editing functions. Equally important, you can save files in TIFF, BMP, JPEG, searchable PDF for easier document retrieval, or encrypted PDF for security-sensitive documents. The software also offers a number of more powerful features such as full-text OCR, file name indexing capabilities, folder capacity monitoring, and the ability to add/replace pages. An optional Barcode Software Module automates many workflow processes, including indexing, batch separation, and forms recognition.

ADVANCED SCANNING TECHNOLOGY IN A SMALL PACKAGE

The DR-2580C scanner is not only one of the smallest and most versatile in its class, but also incredibly easy to use. For one-touch operation, simply assign your most common functions to its customizable Scan-To-Job buttons. You'll be able to enhance black-and-white scans with the Contrast Adjustment feature that sharpens images and makes text more distinctive on low-contrast documents. And you'll consistently capture high-quality images thanks to 3-Dimensional Color Correction technology, and a built-in shading board automatically adjusts shading prior to each and every scan job.



DR-2580C with Optional Flatbed Scanner

The DR-2580C also includes the new Rapid Recovery System, which sends only completed image data to your application software, offering seamless scanning operation should a feeding error occur. And the Punch Hole Removal function removes the black dots that appear when you scan pages from booklets or binders.

FROM THE LEADER IN IMAGING TECHNOLOGY

Compact, powerful, and fast. The Canon DR-2580C color scanner is designed to meet the diverse imaging needs of your busy office. This innovative device offers you the most advanced features in document scanning. Boasting record speeds for scanning and saving to searchable PDF has earned the DR-2580C scanner *PC Magazine's* Editors' Choice award. Not surprising since it's from Canon, the brand the world relies on for the latest solutions in imaging technology.



Straight Path for Card Scanning



Scan-To-Job Buttons for One-Touch Operation

SPECIFICATIONS



DR-2580C with Optional Half Letter-Sized Flatbed Unit

MAIN UNIT

Type:	Compact Color Document Scanner	
Item Number:	0080B002	
Document Feeding:	Automatic or Manual	
Document Size		
Width:	2.1" - 8.5"	
Length:	2.8" - 14" (Up to 39" Long Document Mode)	
Weight		
U-Turn Path		
Automatic Feeding:	14 - 32 lb. Bond	
Manual Feeding:	11 - 40 lb. Bond	
Straight Path		
Automatic Feeding:	11 - 40 lb. Bond	
Manual Feeding:	11 - 40 lb. Bond	
Feeder Capacity:	50 Sheets	
Grayscale:	8-Bit	
Color:	24-Bit	
Scanning Element:	Contact Image Sensor (CMOS)	
Light Source:	RGB LED	
Scanning Modes:	Simplex, Duplex, Color, Grayscale, Black and White, Advanced Text Enhancement, Error Diffusion	
Dropout Color:	RGB	
Optical Resolution:	600 dpi	
Output Resolution:	100/150/200/240/300/400/600 dpi	
Scanning Speeds*		
(LTR Portrait @ 200 dpi)	Simplex	Duplex
Black and White:	25 ppm	50 ipm
Grayscale:	25 ppm	50 ipm
Color (150 dpi):	17 ppm	32 ipm

Interface:	Hi-Speed USB 2.0
Scanner Drivers:	For Windows® 98/2000/Me/XP: ISIS/TWAIN
Dimensions (H x W x D):	3.2" x 12.0" x 6.6"
Weight:	Approximately 4.2 lb.
Power Consumption:	19W or Less (Energy Saving Mode: 6W or Less)
Daily Duty Cycle:	Approximately 1,000 Scans

Bundled Software

ISIS/TWAIN Drivers
CapturePerfect 3.0
Adobe Acrobat 7.0 Standard

Options

Flatbed Unit (0106B001)
Half Letter-Sized Flatbed Unit (0106B003)
Barcode Software Module (0434B003)
Exchange Roller Kit (0106B002)
Carrying Case (0676V383)
Two-Year CarePAK Exchange Program (0106B005)

Other Features

Ultrasonic Double-Feed Detection
Scan-To-Job Buttons
3-Dimensional Color Correction
Folio Mode
Plastic Card Scanning

* Examples based on typical settings, rated in pages/images per minute with letter-sized documents at 200 dpi unless otherwise specified. Actual processing speeds may vary based on PC performance and application software.

NOTE: The DR-2580C has been tested for compatibility with many of the industry's leading document management solution providers. Please visit the scanner's product page on Canon U.S.A.'s Web site at www.usa.canon.com for a comprehensive compatibility listing.

Canon
*image*ANYWARE

As an ENERGY STAR® Partner, Canon U.S.A., Inc. has determined that this product meets the ENERGY STAR guidelines for energy efficiency. ENERGY STAR and the ENERGY STAR mark are registered U.S. marks. ISIS is a registered trademark of CaptivaSoftware Corporation. Adobe, the Adobe logo, and Acrobat are registered trademarks of Adobe Systems Incorporated in the United States and/or other countries. Windows is a registered trademark of Microsoft Corporation in the United States and/or other countries. CapturePerfect is a registered trademark of Canon Electronics Inc. CANON is a registered trademark of Canon Inc. in the United States and may also be a registered trademark or trademark in other countries. CAREPAK is a registered trademark of Canon U.S.A., Inc. IMAGEANYWARE is a trademark of Canon. All referenced product names and other marks are trademarks of their respective owners.
Specifications subject to change without notice.
©2006 Canon U.S.A., Inc. All rights reserved.

Office Technology Irl. Ltd.,
Unit G9 Riverview Business Park,
Nangor Road,
Dublin 12.
Tel: 01 460 44 44
Fax: 01 460 33 33
Email: info@officetechnology.ie
Website: www.officetechnology.ie

