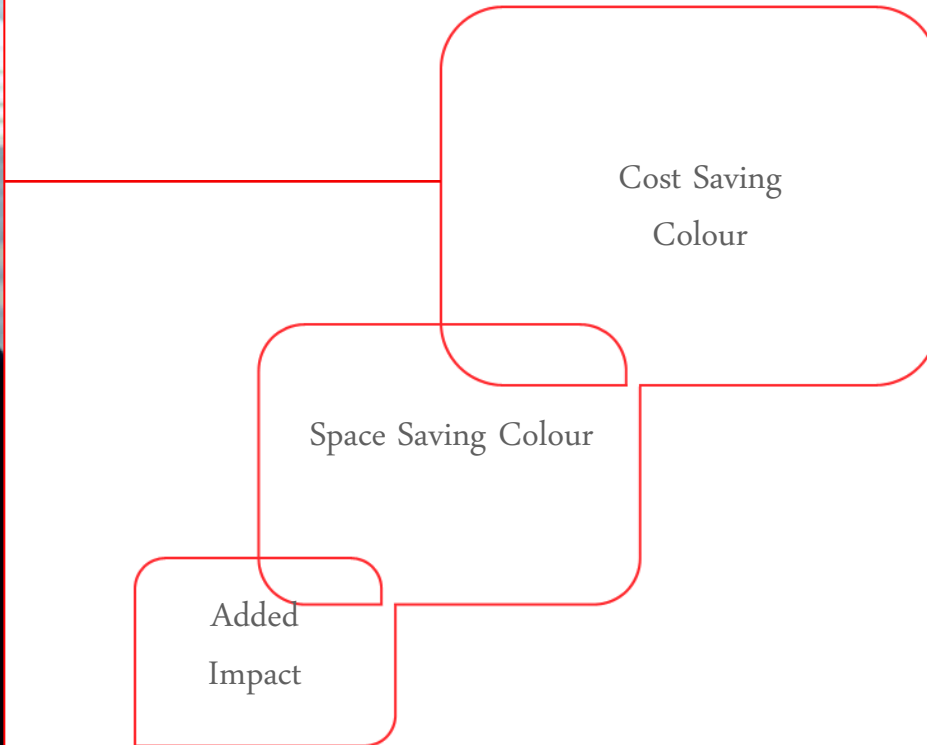
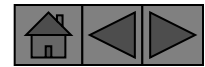
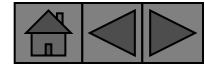


Canon Colour Solutions for the Office



Did you know...



Colour is **82%** more likely to be
remembered

Colour can **reduce**
mistakes by **80%**

68% of organisations agree that colour
creates a more **professional** image

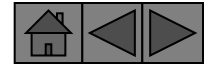
57% of companies have **saved time**
since introducing colour

Colour helps the reader **locate**
information up to **70% faster**

Sources: IDC, 2005 / Case & Company

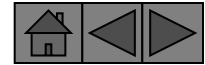
you can
Canon

Canon Office Colour...



*...helps you to **save time** and **money** by allowing you to **print** professional looking office colour documents **in house**, and **control** who prints in colour*

Introducing Office Colour from Canon



*Canon is proud to boast more than **14 colour multifunctional devices** designed specifically **for offices** – and because we know that all businesses are different, we have tailored two distinct ranges so you will be sure to find what you're looking for. Choose from...*

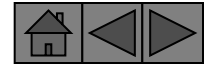
Smart Colour

*8 multifunctional printers for environments printing **20% or more** of their pages in colour for cost effective office printing*

Black & White with Smart Colour (BWSC)

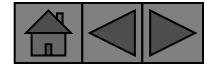
6 Black & White multifunctional printers with colour capability, for environments printing 15% or less of their pages in colour, providing occasional access to convenient colour

Why Canon Office Colour Multifunctionals?



1. **Lower acquisition costs** than separate dedicated colour and black and white devices
2. Combining colour and black and white printing in one device **saves space**
3. Workgroups are able to benefit from **affordable colour** in the office, whilst retaining a competitive black and white click
4. Fixed costs per page regardless of coverage **reduces costs** compared to desktop colour printers

Canon's Smart Colour Portfolio



iR C2380i

Duplex Copy/Print/Scan as standard
23ppm B&W & Colour
Max capacity: 4,950 sheets
Scan to e-mail /PC/ iWDM/ WebDAV

Options:
1200dpi, Internal finishing enabling stapling, External finishing for sorting/ collating/ stapling / booklet making, Fax, PostScript 3 Emulation, Wireless printing

iR C2880i/ iR C3380i

28 / 33 ppm B&W, 26 / 30
ppm Colour
1200 dpi printing as std

Options:
EFI Printing (non-i models only)

iR C4080i / iR C4580i

40 / 45 ppm B&W
36 / 40 ppm Colour

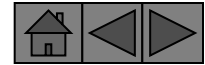
iR C5185i

51ppm B&W & Colour

Options:
Single pass duplex scanning for 100ipm

Smart Colour Line-up

Canon's BWSC range



iR3180C/Ci

*Duplex Copy/Print/Scan as standard
(iR3180Ci)*

31ppm B&W, 7ppm Colour

Max capacity: 4,950 sheets

Scan to e-mail/PC/iWDM/WebDAV

*Options: Sorting/collating/stapling
/booklet making, Fax, Additional
Cassettes/ Side Paper Deck, PostScript
3 Emulation printing*

iR5880C/Ci

*Duplex Copy/Print/Scan as standard
(iR5880Ci)*

58ppm B&W, 16ppm Colour

Max capacity: 7,700 sheets

Options:

*High capacity sorting/ collating/ stapling
/ booklet making, Fax, PostScript 3
Emulation Printing, EFI Printing,*

iR6880C/Ci

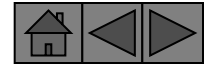
*Duplex Copy/Print/Scan as standard
(iR6880Ci)*

68ppm B&W, 16ppm Colour

Black & White with Smart Colour

you can
Canon

Canon Office Colour - Key Range Features



MEAP enabled for
customised applications e.g. eCopy /
iW Function Flow / iWAM

Network ready multifunctionals

Space saving and cost effective with
Print, Copy & i-SEND

23-68ppmB&W & 7-51ppm
Colour Print & Copy speeds

Automatic Colour Sensing (ACS)

Only pay for colour when you use it

High Quality

High resolutions, a choice of drivers
and innovative Canon technology
ensure professional office output every
time



Versatile **Finishing** using internal
or external finishers and Canon's
iW360 software for professional
output and increased productivity

Security

for network, device and document
e.g. Common Criteria compliance &
Secure Watermark

Energy Efficient

low 3W energy consumption in
sleep mode

Control

of network, device and device usage
using software such as iWMC,
UniFLOW & AMS

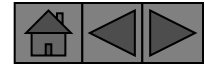
High speed **one pass duplex**
scanning
iRC5185i only

Enhanced accessibility

Voice Operation & Voice
Recognition

you can
Canon

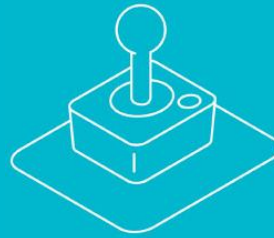
Find out how Canon's Office Colour range can help you.....



KEY
FEATURES



CONTROL & REDUCE
COSTS



INCREASE CONTROL



INCREASE SECURITY



INCREASE
PRODUCTIVITY

CANON OFFICE
COLOUR

REDUCE COSTS

INCREASE CONTROL

INCREASE SECURITY

INCREASE
PRODUCTIVITY

WHY CANON?



REDUCE COSTS

CANON OFFICE
COLOUR

REDUCE COSTS

INCREASE CONTROL

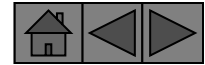
INCREASE SECURITY

INCREASE
PRODUCTIVITY

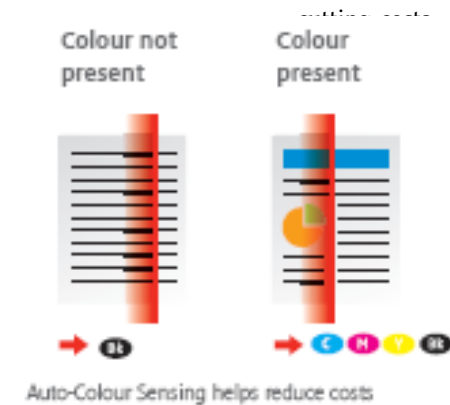
WHY CANON?



Automatic Colour Sensing



- **Issue**
 - Dedicated colour devices often have high acquisition costs, and high black and white clicks costs
 - When printing devices will reproduce black as a combination of CMYK, meaning black and white output can be charged at more expensive colour rates per page
- **Solution**
 - Canon's Office Colour devices use Automatic Colour Sensing technology to intelligently detect when colour is present on a page
- **Benefit**
 - You only pay for colour when you use it,



Fixed Cost per Page

– Issues

- Printed colour is a build up of Cyan, Magenta and Yellow, so the more colour on the page (coverage), the more ink/toner is used
- Cartridge based devices are generally toner exclusive and so have varied and often high costs per page

– Solution

- Canon's Office Colour devices are toner inclusive with fixed costs per page

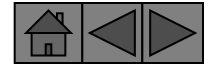
– Benefits

- You pay the same rate per page, regardless of coverage, reducing costs and improving cost control and business predictability

- *For more information about how much desktop colour printing could be costing your business, go to Canon's online cost calculator*



i-SEND as standard



- **Issues**
 - Hardcopy document distribution can cost businesses up to 3% of their annual turnover*
 - 64% of documents are kept in hardcopy format and stored in filing cabinets*, taking up valuable space and making retrieval time consuming
- **Solution**
 - Canon's Office Colour devices come with i-SEND as standard for fast scanning to E-Mail/Internet FAX(SMTP), PC(SMB,FTP,NCP), iWDM, WebDAV
- **Benefits**
 - You can reduce the costs of hardcopy distribution (fax/courier/post)
 - You can reduce the costs and space associated with hardcopy storage
 - *You can redirect these funds directly to your bottom line, or to business critical projects to boost your bottom line*

* Source: IDC, 2006

Access Management System (AMS)

Issues

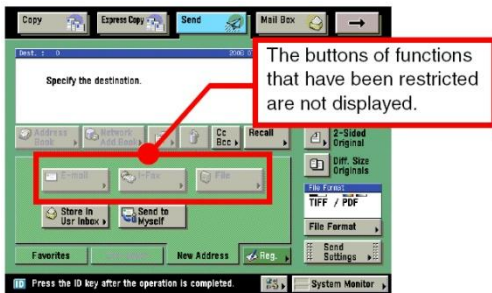
- Unregulated colour output is costly
- Unregulated printing/copying/faxing is costly
- Inefficient printing/copying e.g. single sided rather than double sided wastes money (and paper)

Solution

- AMS enables device functionality to be customised by a system administrator for individuals by applying the restrictions to:
 - Device applications e.g. Print, copy, scan, send, MEAP, mail box, and browser application tabs
 - Device application functions e.g. colour copying, or editing the address book - provided by applications such as copy, send, and mail box

benefits

- Users only have access to the functions they require to perform their business tasks
- Unnecessary printing/faxing/copying/colour usage/single sided output is cut for cost savings



you can
Canon

Department ID Management

Issues

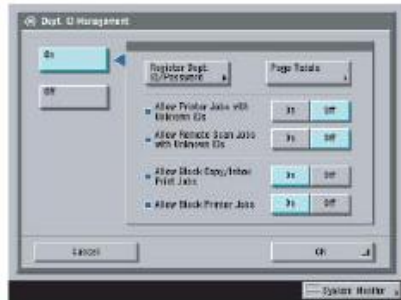
- Unregulated colour output is costly
- Unregulated printing/copying/faxing is costly

Solution

- Department ID Management is a standard feature on Canon's Office Colour devices and enables user quotas to be set via the Remote User Interface (RUI)
 - e.g. to limit number of colour prints by user/department

Benefit

- Output can be controlled leading to improved cost control and potentially reductions

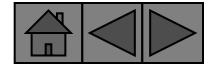


■ Dept. ID Management Screen



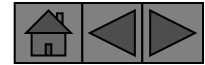
■ Turn Limits On/Off and Set Page Limits Screen

Versatile Finishing



- **Issues**
 - Outsourced printing e.g. letterheads/marketing collateral can be expensive
 - Bulk printing can be wasted as content goes out of date
 - External printing leads times can impact customer responsiveness
- **Solution**
 - Canon's Office Colour range offer:
 - Finishing options including booklet making, stapling and hole punching
 - 1200dpi printing resolution, and award winning laser, drum and fixing technologies
- **Benefit**
 - High quality, professionally finished documents can be produced in-house, on demand, with no need to pay a premium for outsourcing

Mailboxes

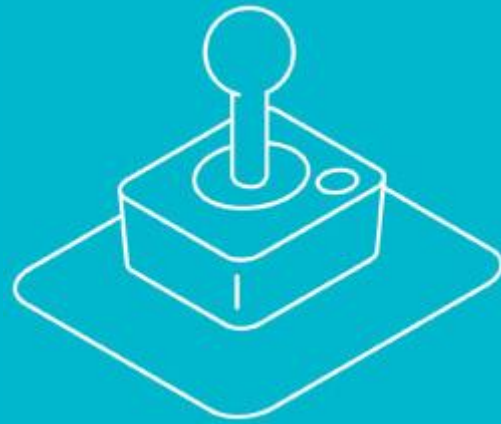


- Issue
 - Printed output gets picked up by wrong individual and needs re-printing
- Solution
 - Mailboxes – standard on Office Colour devices: Documents can be printed to mailboxes and printed on demand
- Benefit
 - Reduce wasted paper for cost environmental benefits



Mailbox

* Source: IDC, 2005



INCREASE CONTROL

CANON OFFICE
COLOUR

REDUCE COSTS

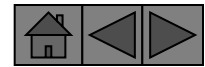
INCREASE CONTROL

INCREASE SECURITY

INCREASE
PRODUCTIVITY

WHY CANON?

you can
Canon



ID Management

Set user quotas to keep usage under control



Remote User Interface (RUI)

Manage your Canon Office Colour device from a single, remote point of control



Canon's iW Access Management System (AMS)

For intelligent device usage restrictions



iW Management Console

Centralised fleet control



Print Redirection

A Uniflow module that helps you ensure users are printing to the most cost effective printer



Toner Inclusive, Fixed Cost per Page

For visibility and predictability of true printing costs



Click on a feature to find out more about how Canon's Office Colour devices can help you control your fleet, and printing behaviour in your organisation...

CANON OFFICE
COLOUR

REDUCE COSTS

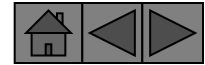
INCREASE CONTROL

INCREASE SECURITY

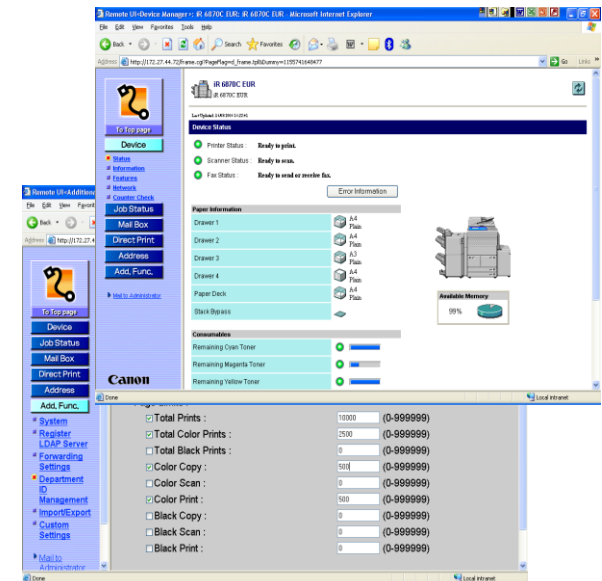
INCREASE
PRODUCTIVITY

WHY CANON?

Remote User Interface (RUI)

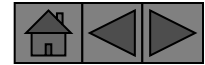


- Issue
 - IT spend 15% of their time dealing with printer related queries
- Solution
 - View device status remotely using Remote User Interface using the IP address (securely if required)
 - Set up automated e-mails to an Administrator notifying of device errors
- Benefit
 - Diagnose and remedy printer related issues more quickly

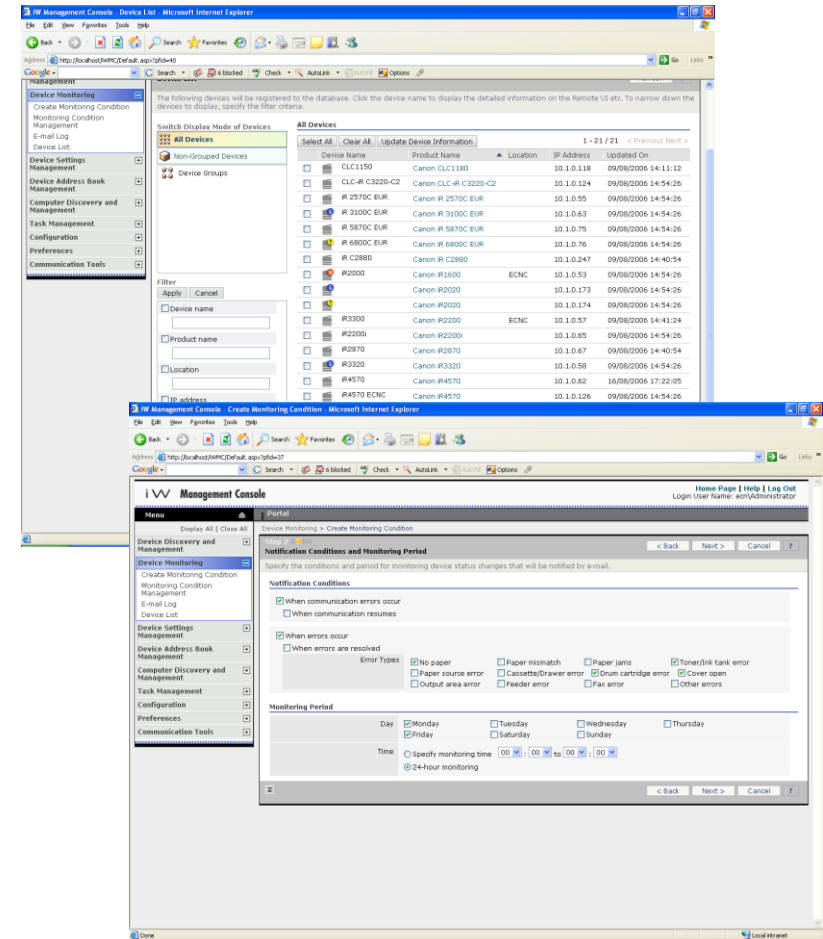


you can
Canon

iW Management Console (iWMC)



- Issue
 - IT spend 15% of their time on print related issues (IDC, 2005)
- Solution
 - Discover multiple devices & monitor their status on the network, including other manufacturer devices
 - Access the individual device interfaces to control who prints and how much they print using Department IDs
 - Set tasks for each device to monitor items such as, out of paper, paper jams, and other errors
 - Set e-mail notifications of errors to administrators
 - Manage address books centrally
- Benefit
 - Reduce IT time spent managing printer fleets, increasing time spent on more business critical tasks



CANON OFFICE
COLOUR

REDUCE COSTS

INCREASE CONTROL

INCREASE SECURITY

INCREASE
PRODUCTIVITY

WHY CANON?

you can
Canon

Department ID Management

Issues

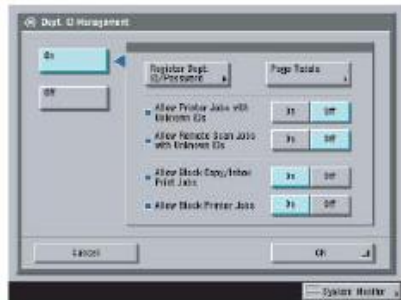
- Unregulated output is costly
- There is limited visibility of how much Departments/users are printing

Solution

- Department ID Management is a standard feature on Canon's Office Colour range and enables user quotas to be set via the Remote User Interface (RUI) e.g. to limit number of colour prints by user/department

Benefits

- Output can be controlled leading to improved cost control and potentially reductions
- Print volumes by Dept are more visible for increased accountability

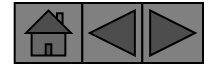


■ Dept ID Management Screen



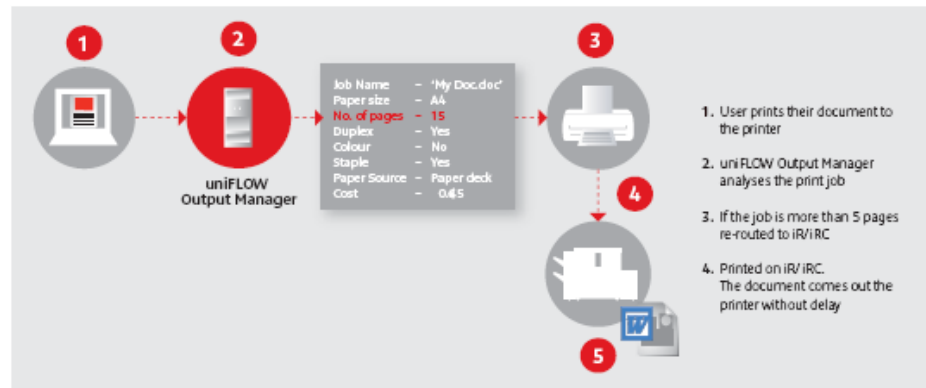
■ Turn Limits On/Off and Set Page Limits Screen

Print Redirection



- Issue
 - Users are sending print jobs to the incorrect devices e.g. large, high coverage colour documents to desktop printers
- Solution
 - Implement (optional) uniFLOW Job Routing module to automatically divert to correct device (e.g. iRC2880i)
 - subject to pre-defined rules. E.g.

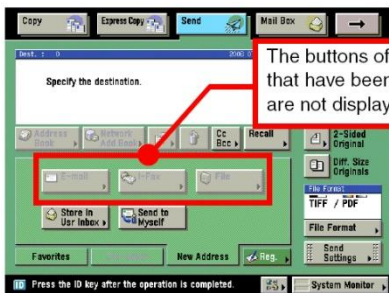
Automatic job re-routing based on rules (job size, colour/B&W, device cost per page etc)



- Benefit
 - Ensures jobs are output on most cost effective device
 - Ensures workloads are balanced between devices and assets are fully utilised

Access Management System (AMS)

- Issue
 - Unregulated device usage can be costly (e.g. unnecessary/personal faxing/copying/printing) and unproductive
- Solution
 - AMS enables device functionality to be customised by the system administrator to individuals based on their business requirements and by applying the following restrictions to:
 - Device applications e.g. Print, copy, scan, send, MEAP, mail box, and browser application tabs
 - Device application functions e.g. colour copying, or editing the address book - provided by applications such as copy, send, and mail box

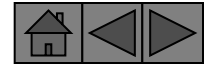


benefits

Users are only given access to the features they need, cutting down on unnecessary tasks

User device operation is simplified as they only see the functions that are available to them, enhancing productivity and reducing calls to IT helpdesk

Fixed Cost per Page



- **Issues**
 - Printed colour is a build up of Cyan, Magenta and Yellow, so the more colour on the page (coverage), the more ink/toner is used
 - Cartridge based devices are generally toner exclusive and so have varied and often high costs per page
- **Solution**
 - Canon Office Colour range are toner inclusive devices with fixed costs per page
- **Benefits**
 - You pay the same rate per page, regardless of coverage, reducing costs and improving cost control and business predictability
- *For more information about how much desktop colour printing be costing your business, go to Canon's online cost calculator*





INCREASE SECURITY

CANON OFFICE
COLOUR

REDUCE COSTS

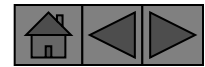
INCREASE CONTROL

INCREASE SECURITY

INCREASE
PRODUCTIVITY

WHY CANON?

you can
Canon



HDD Data Encryption & Data Erase

Protecting sensitive information on your MFP's hard disk



Digital User Signature PDF Kit
Optional kit that identifies who sent a document so received scans can be traced



PDF Security
For enhanced security of documents transmitted via i-SEND



Secure Printing
Prevents sensitive information being leaked via MFP



Secure Watermark
Additional level of security for confidential documents



Authentication

Optional MIND or MiCard box restricts access to device until user has authenticated (various options available)



CANON OFFICE
COLOUR

REDUCE COSTS

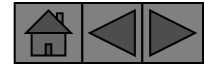
INCREASE CONTROL

INCREASE SECURITY

INCREASE
PRODUCTIVITY

WHY CANON?

Secure Printing



- **Issues**
 - 53% of office employees have found confidential documents on the printer*
 - Prints are not collected / are picked up by the wrong person
- **Solutions**
 - **Mailboxes** (standard): Store documents in mailboxes and print on demand
 - **Secure Print** (standard): Allow users to set a password at their PC and use it at a device to print on demand
 - **Secure Mailboxes** (option): Documents can be printed to password protected mailboxes
 - **Secure Release** (option): With UniFLOW Output Manager confidential documents can be sent to the server and released upon authentication (e.g. proximity card/finger print/PIN/password)at any device on the network
- **Benefits**
 - Prevent sensitive documents being left on tray
 - Prevent unauthorised access to confidential (Personal and

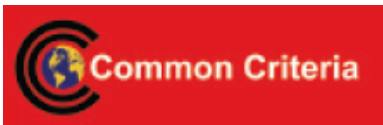


the out-

* Source: IDC, 2005

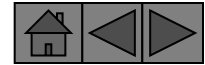
HDD Data Encryption & Data Erase

- **Issue**
 - MFP hard drives contain sensitive information
- **Solutions**
 - HDD Data Encryption: Conforms with the internally recognised Common Criteria EAL3 standard. 128-bit encryption means that even if someone steals or hacks the hard disk from your printer, you can be sure they won't be able to read it
 - HDD Data Erase: Users can erase data from the hard disk after a job has completed, and allows list of jobs to be concealed from everyone except system administrator
- **Benefits**
 - Peace of mind that sensitive information cannot be accessed / removed from organisation by unauthorised personnel
 - Compliance with recognised Common Criteria global standard for IT security set by international security agencies



* Source: IDC, 2005

Device Authentication

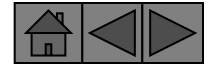


- **Issue**
 - Sensitive information can be accessed from the MFP by unauthorised personnel
- **Solutions**
 - Using an optional MIND box or MiCard system, users can only release jobs once they have authenticated at the device using either proximity card, swipe card, PIN code or fingerprint ID

- **Benefits**
 - Peace of mind tha



* Source: IDC, 2005



– Issues

- Anonymous or falsified sending of documents
- Tampering of sent documents
- Sensitive information can be accessed from the MFP by unauthorised personnel

– Solutions

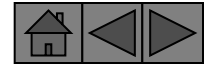
- Digital User Signature Kit: Optional kit that identifies who sent a document
- PDF Advanced Security Set: Optional kit that includes:
 - PDF Encryption: Encrypts and password protects PDF's, and limits the type of locations PDF's can be sent to
 - Device signature: Adds a digital signature to a PDF file so recipient can verify which device scan was sent from, and whether it has been altered

– Benefits

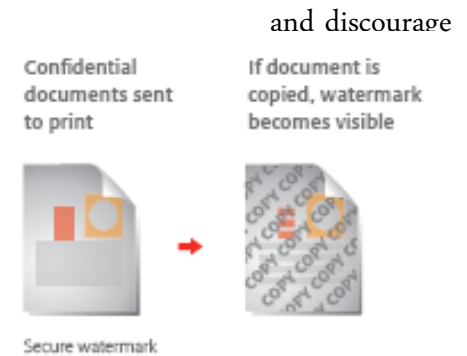
- Ensure documents sent via the Canon MFP can be traced back to device (device signature) and sender (digital user signature)
- Restricts uncontrolled sending of sensitive PDF's (PDF Encryption)
- Restricts access to sent PDF's (PDF Encryption)

* Source: IDC, 2005

Secure Watermark



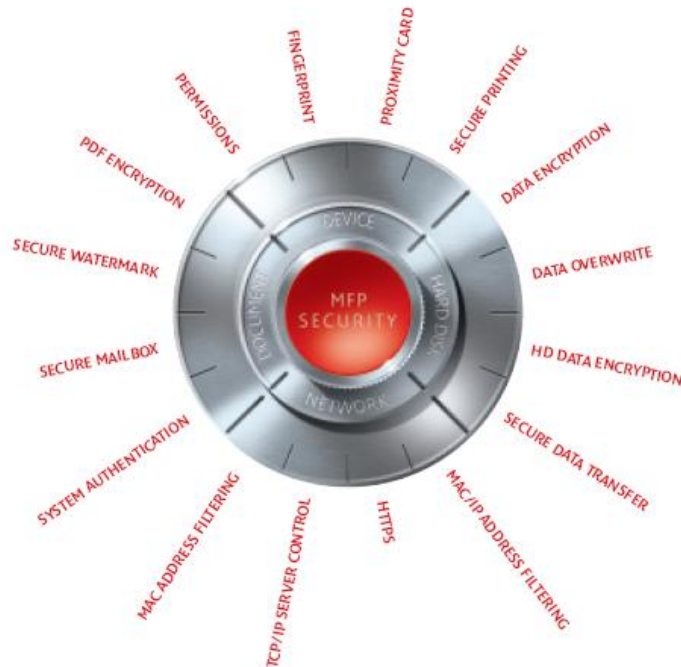
- **Issue**
 - Uncontrolled duplication of confidential documents
- **Solution**
 - Using optional Secure Watermark Kit A1, an invisible watermark can be printed on documents so that, when copied, the word 'confidential' appears across the document
 - Users can either select this at will via the print driver, or the system administrator can activate FORCED Secure Watermark so all documents are printed with a confidential watermark
- **Benefit**
 - You can clearly mark sensitive information unauthorised copying



**All models except iR3180C/Ci*

Want more information?

- For more information on Canon’s comprehensive security proposition, please refer to Canon’s Security Brochure ‘Simple defence for your business’





INCREASE PRODUCTIVITY

CANON OFFICE
COLOUR

REDUCE COSTS

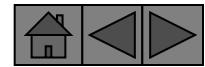
INCREASE CONTROL

INCREASE SECURITY

INCREASE
PRODUCTIVITY

WHY CANON?

you can
Canon



High speed one pass duplex
scanning
iRC5185i only

Up to 68ppm Print/Copy in
B&W/51ppm Colour
For productive office output

i-SEND as Standard
*Instant electronic document
distribution*

MEAP Enabled
*Enhance your MFP to make it work
better for YOUR organisation*

E-Maintenance
*Automated meter readings and toner
replenishment to maximum uptime*



Finishing
*Saves time spent manually
collating/finishing*

Wireless Printing
*For flexible optimum MFP placement
to maximise productivity*

Windows Vista WSD support
For device network 'plug and play'

Up to 7,700 sheet paper
capacity
Essential for busy offices

Intuitive and Consistent User
Interfaces
For quick easy operation

CANON OFFICE
COLOUR

REDUCE COSTS

INCREASE CONTROL

INCREASE SECURITY

INCREASE
PRODUCTIVITY

WHY CANON?

MEAP (Multifunctional Embedded Application Platform)

- **Issue**
 - Your business requirements are unique and printer hardware and software platforms are similar
- **Solution**
 - MEAP – A Java based OPEN platform available across Canon's Office Colour portfolio enabling customised software applications to be embedded onto your MFP e.g.
 - Quick Print Enterprise was developed to help Euro 2004 journalists access and print up to the minute information directly from the MFP
- **Benefit**
 - You can benefit from the many existing MEAP applets, or **customise your own**, to ensure you are maximising your MFP and employee productivity

you can
Canon

Productive Finishing



– Issue

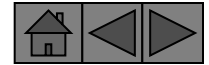
- Manual collation of reports is time consuming
- Limited finishing capacity requires users to empty delivery trays to complete larger print runs

– Solution

- Canon's Office Colour devices offer duplex as standard and has a variety of finishing options offering automatic booklet making, tab insertion, stapling, collation and sorting
- Canon's iR5880C/Ci, iR6880C/Ci, iRC4080i, iRC4580i & iRC5185i have a high finishing capacity of 4000 sheets
- Canon's iW360 software enables the electronic collation of files from different applications into a single document that can be edited and professionally finished as a saddle stitched booklet

– Benefit

- Time spent manually finishing can be more effectively used to enhance business productivity
- Time spent emptying delivery trays can be more productivity used



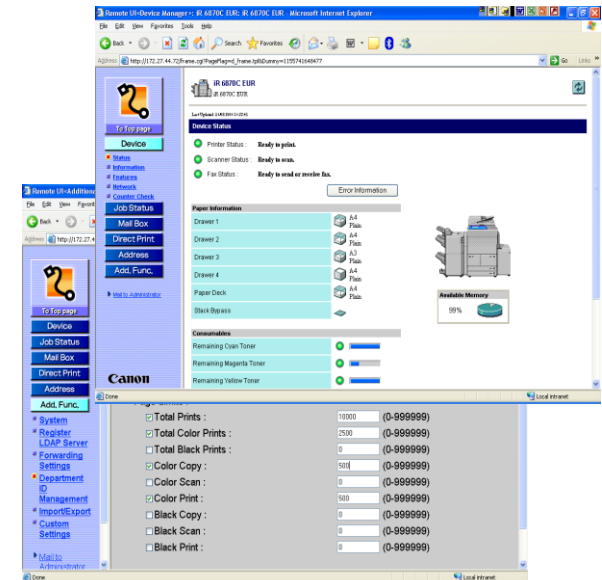
Windows Vista WSD Support

- Canon's Office Colour devices support Windows Vista Web Services for Devices (WSD)

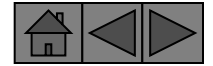
- **Benefits**
 1. Device Discovery – *the Office Colour devices can be located and displayed within Vista Explorer via Add Printer Wizard*
 2. Network plug & play of device drivers – *Devices can be automatically discovered on the network and device ID's retrieved using the WSD protocol for automatic installation of the correct device driver*
 3. Job completion - *A print job will remain visible until output, rather than when job has finished sending to the device*

Remote User Interface (RUI)

- Issue
 - IT spend 15% of their time dealing with printer related queries
- Solution
 - View device status remotely using Remote User Interface using the IP address (securely if required)
 - Set up automated e-mails to an Administrator notifying of device errors
- Benefit
 - Diagnose and remedy printer related issues more quickly



One Pass Duplex

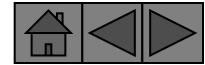


- *Using new optional Colour Image Reader – G1 on iRC5185i only*
- Maximises **productivity** by scanning both sides of a double sided document in a single pass, achieving
 - Scans 51ipm at 600dpi / 100ipm at 300dpi – three times faster than competitors
- **User friendly** operation - No need for a reversing circuit to scan twice, so minimises paper mis-feeds and maintains integrity of original
- One pass duplexing **reduces noise** compared to duplexing via reversing circuits



Scan productivity

Canon's competitive advantage



		Canon		Ricoh	Fuji-Xerox	Sharp
		iR C45/4080i	iR C5185i	Aficio3260C	WC7665	MX-4501N
COPY	BW, 1-sided	51ipm	51ipm	60 ipm	82 ipm (Actual measurement)	60 ipm
	BW, 2-sided	35ipm	51ipm	43 ipm	85 ipm (Actual measurement)	60 ipm
	Colour, 1-sided	51ipm	51ipm	45 ipm	50 ipm (Actual measurement)	35 ipm
	Colour, 2-sided	35ipm	51ipm	34 ipm	30 ipm (Actual measurement)	35 ipm
Scan	BW, 1-sided	70 ipm (200/300dpi)	70 ipm (200/300dpi)	60 ipm (200dpi)	100 ipm (200dpi)	60 ipm (300dpi)
	BW, 2-sided	38 ipm (200/300dpi)	100 ipm (200/300dpi)	52 ipm (200dpi)	200 ipm (200dpi)	60 ipm (300dpi)
	Colour, 1-sided	70 ipm (200/300dpi)	70 ipm (200/300dpi)	45 ipm (200dpi)	50 ipm (200dpi)	35 ipm (300dpi)
	Colour, 2-sided	38 ipm (200/300dpi)	100 ipm (200/300dpi)	41 ipm (200dpi)	30 ipm (Predicted value)	35 ipm (300dpi)

- Canon offers the fastest colour copying and scanning on the market
- The iR C5185i offers consistent colour and mono speeds for maximum productivity

CANON OFFICE COLOUR

REDUCE COSTS

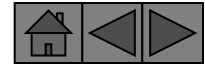
INCREASE CONTROL

INCREASE SECURITY

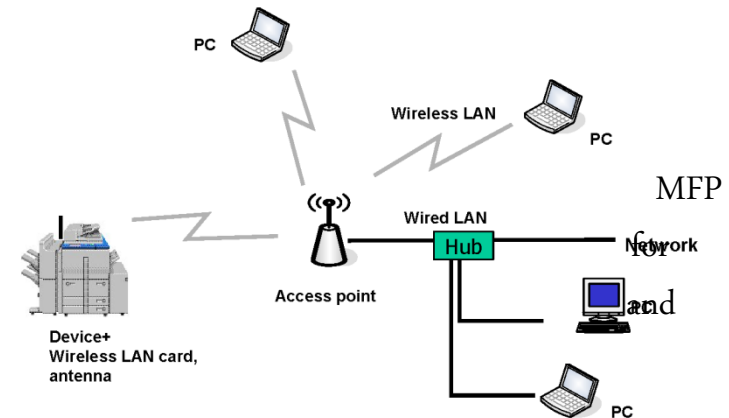
INCREASE PRODUCTIVITY

WHY CANON?

Wireless Printing



- Issues
 - MFP location is restricted based on proximity to network point / cabling availability meaning device can't be located in optimum position
 - Unsightly and expensive cabling
- Solution
 - Optional wireless printing
- Benefit
 - Greater flexibility to locate in optimum position
 - maximum convenience
 - productivity



WHY CANON?

CANON OFFICE
COLOUR

REDUCE COSTS

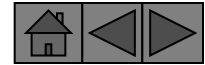
INCREASE CONTROL

INCREASE SECURITY

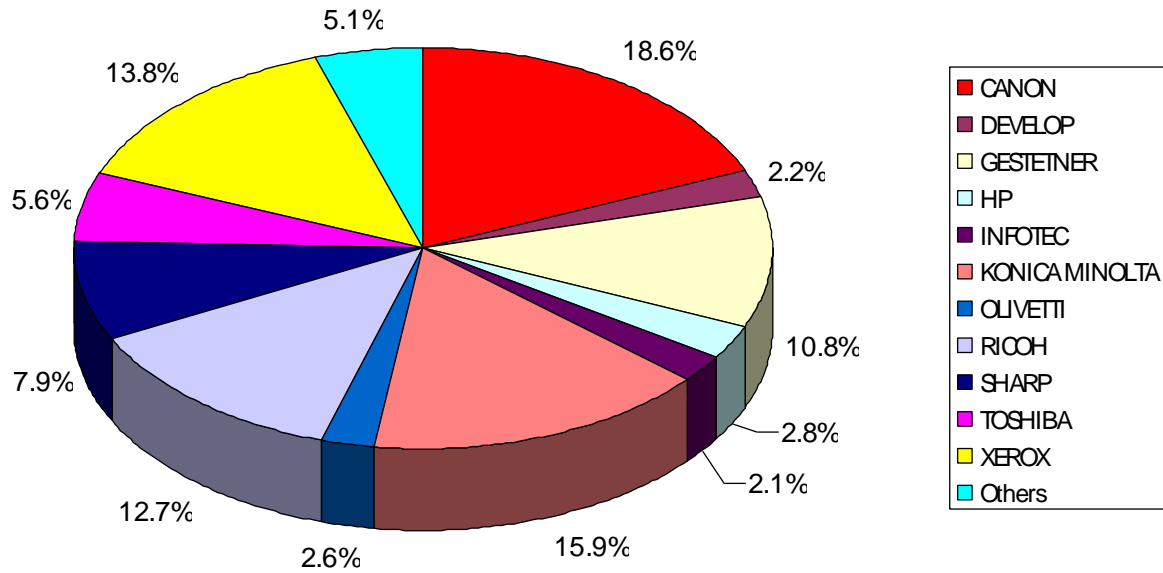
INCREASE
PRODUCTIVITY

WHY CANON?

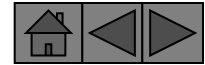
Canon – Leading the way in Colour



UK Colour & Colour Capable Market by Brand - 2007



- *Canon has been No. 1 in the colour market for more than 10 years*
- *Canon has sold more than 1 million colour devices globally*



you can
Canon

Single Supplier Balanced Deployment Solutions from Canon

	Canon	HP	Ricoh	Xerox	Sharp	Konica Minolta	Lexmark	Kyocera	Samsung	Brother
B&W Segment 1 MFP	✓		✓	✓	✓	✓		✓		
B&W Segment 2 MFP	✓	✓	✓	✓	✓	✓	✓	✓		
B&W Segment 3 MFP	✓	✓	✓	✓	✓	✓	✓	✓		
B&W Segment 4 MFP	✓	✓	✓	✓	✓	✓		✓		
B&W Segment 5 MFP	✓		✓	✓		✓				
BWSC MFP	✓		✓	✓	✓		✓			
Full Colour MFP	✓	✓	✓	✓	✓	✓		✓		
Fax	✓	✓	✓	✓	✓		✓		✓	✓
B&W Laser SFP	✓	✓	✓	✓	✓	✓	✓	✓	✓	✓
Colour Laser SFP	✓	✓	✓	✓	✓	✓	✓	✓	✓	
B&W Laser Cartridge MFP	✓	✓		✓	✓	✓	✓		✓	✓
Colour Laser Cartridge MFP	✓	✓	✓			✓		✓	✓	✓
Scanners	✓	✓	✓	✓						
LFP	✓	✓								
Inkjet SFP	✓	✓					✓			
Inkjet MFP	✓	✓					✓			✓

CANON OFFICE
COLOUR

REDUCE COSTS

INCREASE CONTROL

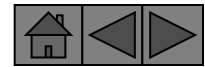
INCREASE SECURITY

INCREASE
PRODUCTIVITY

WHY CANON?

you can
Canon

The Canon Colour Family



imagePRESS
Production
Printers



CLC
Professional
Multifunctional
Printers



iR Office
Multifunctional
Printers



i-SENSYS
Desktop Laser
Printers &
Multifunctionals



PIXMA Desktop
Inkjet Printers &
Multifunctionals



Mobile Inkjet
Printers



SELPHY
Photo Printers

CANON OFFICE
COLOUR

REDUCE COSTS

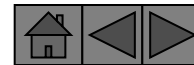
INCREASE CONTROL

INCREASE SECURITY

INCREASE
PRODUCTIVITY

WHY CANON?

you can
Canon



Thank you

OFFICE SOLUTIONS
COLOUR

CANON OFFICE
COLOUR

REDUCE COSTS

INCREASE CONTROL

INCREASE SECURITY

INCREASE
PRODUCTIVITY

WHY CANON?